



450Mbps Wireless N Access Point

Easy Network Expansion
with N450 Wi-Fi

TL-WA901ND



450Mbps 2.4GHz



Passive PoE



5dBi Antennas

Highlights

450Mbps, the Best Choice on 2.4GHz

With the use of 3×3 MIMO intelligent antenna technology, TL-WA901ND reaches speeds of up to 450Mbps, the maximum speed available on 2.4GHz single band, working smoothly with almost any bandwidth intensive applications including VoIP, HD streaming, or online gaming, without any lag.

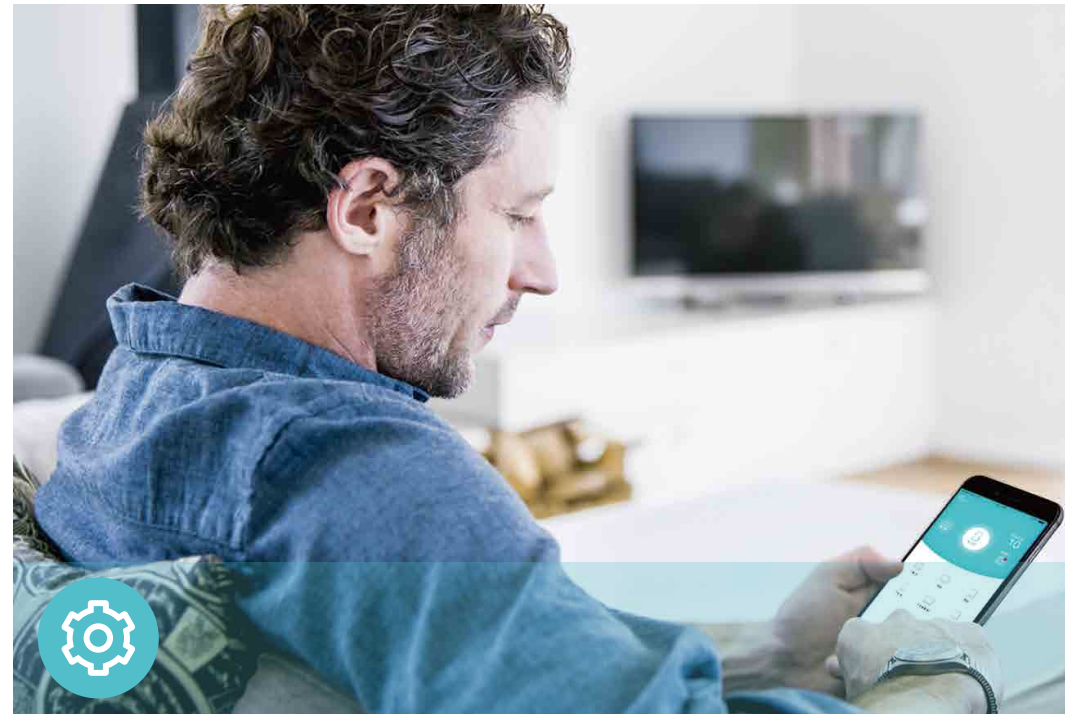


Passive PoE Supported

TL-WA901ND is able to be powered using an Ethernet cable to simultaneously send data and electricity to wherever your AP may be located even up to 100 feet away. This feature multiplies your options allowing you to place the AP in a position that is most convenient to get the best signal possible, such as on a wall or on the ceiling of your office.



Features



Ease of Use

- Intuitive Web UI – Ensure quick and simple Installation without hassle
- Fast Encryption – One-touch WPA wireless security encryption with the WPS button
- Power On/Off – Conveniently power on or off your router as required



Reliability

- Easy Bandwidth Management – Advanced QoS makes it easier for you to manage the bandwidth of connected devices



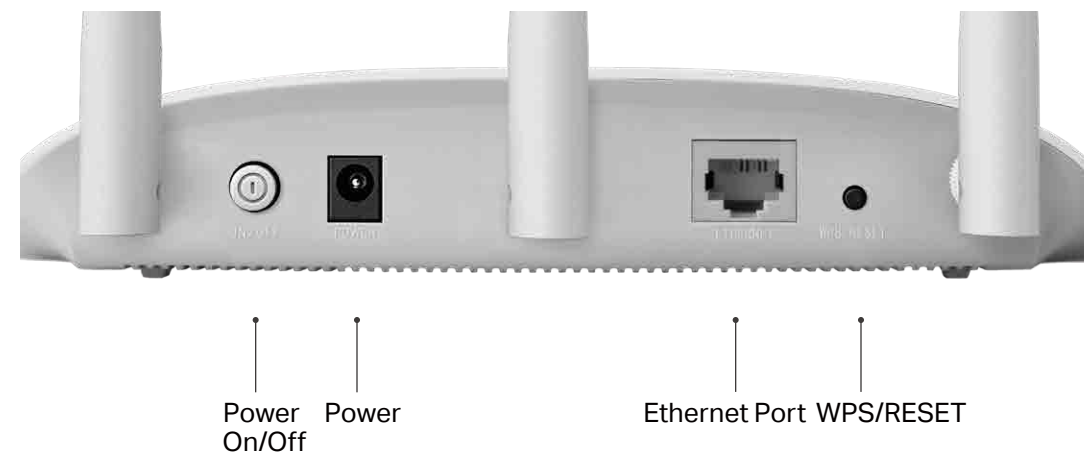
Speed

- Ultimate Wireless Speed – Wireless speeds up to 450Mbps on 2.4GHz
- Fast Ethernet Port – Acts as a wireless adapter to connect wired devices

Specifications

Hardware

- Ethernet Port: 1 10/100Mbps Ethernet Port
- Buttons: Power On/Off Button, Reset/WPS Button
- Antennas: 3 Detachable Omni-Directional Antennas
- External Power Supply: 9VDC/0.85A
- Dimensions (W x D x H): 194.8×130×36.2mm



Wireless

- Wireless Standards: IEEE 802.11b/g/n 2.4GHz
- Frequency: 2.4GHz
- Signal Rate: 450Mbps at 2.4GHz
- Transmit Power:
CE: <20dBm; FCC: <28dBm
- Reception Sensitivity:
11g 54M: -76dBm
11n 20Mbps: -73dBm
11n 40Mbps: -70dBm
- Wireless Function: Enable/Disable Wireless Radio, WDS Bridge, WMM, Wireless Statistics
- Wireless Security: 64/128-bit WEP, WPA/WPA2, WPA-PSK/WPA-PSK2 encryptions

Specifications

Software

- Quality of Service: WMM
- DHCP: Server, DHCP Client List
- Wireless Modes: Access Point, Repeater, Bridge, Client, Multi-SSID
- Protocols: IPv4, IPv6
- System Tools: SNMP, Ping Watch Dog

Others

- Certification:
CE, FCC, RoHS
- System Requirements:
Microsoft Windows 98SE/NT/2000/XP/Vista™/7/8/8.1/10, MAC OS, NetWare, UNIX or Linux

Internet Explorer 11, Firefox 12.0, Chrome 20.0, Safari 4.0, or other Java-enabled browser

Cable or DSL Modem

Subscription with an Internet Service Provider (for Internet access)
- Environment:
Operating Temperature: 0°C~40°C (32°F ~104°F)
Storage Temperature: -40°C~70°C (-40°F ~158°F)
Operating Humidity: 10%~90% non-condensing
Storage Humidity: 5%~90% non-condensing
- Package Contents
450Mbps Wireless N Access Point TL-WA901ND
3 detachable antennas
Power Supply Unit
PoE Power Injector
Ethernet Cable
Quick Installation Guide



For more information, please visit

<http://www.tp-link.com/en/products/details/TL-WA901ND.html>

or scan the QR code left

Attention: This device may only be used indoors in all EU member states and EFTA countries.

Specifications are subject to change without notice. TP-Link is a registered trademark of TP-Link Technologies Co., Ltd. Other brands and product names are trademarks or registered trademarks of their respective holders. Copyright ©2017 TP-Link Technologies Co., Ltd. All rights reserved.

TP-Link Technologies Co., Ltd.

Building 24 (floors 1, 3, 4, 5) and 28 (floors 1-4) Central Science and Technology Park, Shennan Rd, Nanshan, Shenzhen, China

www.tp-link.com

www.tp-link.com

TP-Link 450Mbps Wireless N Access Point TL-WA901ND